



Date		Designed By	Nishant/Kunal
Revision	00	Prepared By	Harsh
Revision Particulars	Issued For Approval	Approved By	Robin Virani

Client/Developer :			
EPC Contractor :			
Consultant Name :			
Project Name			
Title	GTP of 1000V DC PV Solar Straight Inline Fuse Connector Male and Female combination without Fuse Link		
PROJECT NO		REV.	SHEET
DOC.NO		00	1 of 3

Note:- All rights reserved. The documents contain proprietary information which is protected by copyright. No part of this documents may be reproduced, translated in computer language, or transmitted in any form whatsoever without the prior written consent to Elmex Electric Pvt Ltd, Vadodara



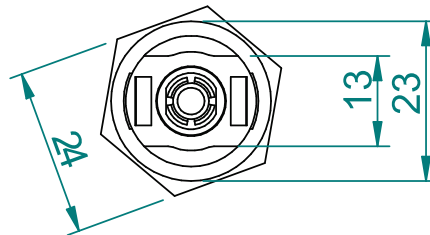
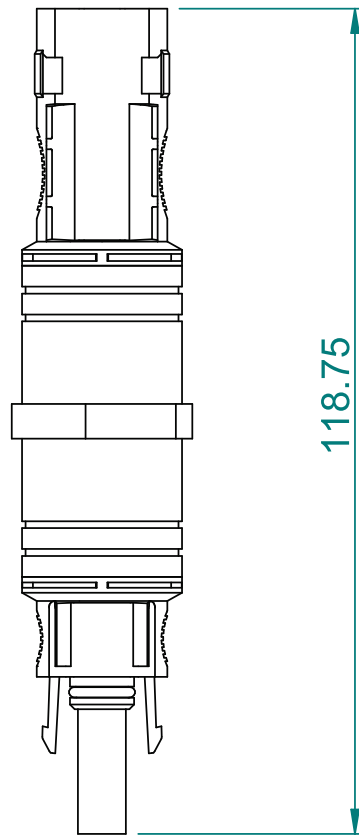
EMPV4IFC


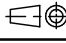
Sr.NO	Technical Parameters for EMPV4IFC	
1	Factory Inspection	Name of Supplier- Elmex Electric Pvt. Ltd. Factory Address- 134-135, GIDC ESTATE, POR - RAMANGAMDI, VADODARA 391243, GUJARAT, INDIA.
2	Product Partcode	EMPV4IFC
3	Rated Voltage	1000V DC
4	Rated Current (TUV)	15A
5	Rated Impulse Voltage	12kV
6	RMS withstand Voltage	6kV
7	Protection Class	Class II
8	Application Class	A
9	Flammability Class	UL94-V0
10	Insulating Material	NORYL 9406P PPE+PS
11	Pollution Degree	3
12	Degree of Protection	IP68 (Mated Condition)
13	Over voltage Category	III
14	Lower Ambient Temperature	-40°C
15	Upper ambient Temperature	+85°C
16	Upper Limit Temperature	+110°C
17	Suitable DC PV Cable Size	2.5 mm ² , 4 mm ² , 6 mm ²
18	Metal Contact Pin material	Copper with Tin Plating
19	Insertion Force	≤50N
20	Withdrawal Force	≥50N
21	Salt mist Spray Test	IEC60068-2-52, Severity 6
22	Locking System	Snap In
23	Fuse Link Suitable Size	ϕ 10 x 38mm  EPVFL
24	Tool require for Opening and Tightening	Part code:EPVOS-S 

* Do not connect Straight Inline Fuse Connectors directly in MPPT of String Inverter.

** Technical specifications may change in line with Technical Advances and industry standards.

1000V DC Straight Inline Fuse Connector



REV. No.	REVISION DETAIL				ECR No.	MODIFY BY	DATE
IF ANY DOUBT PLEASE ASK			REMOVE ALL SHARP EDGES		ALL DIMENSIONS ARE IN "mm"		
		ELMEX CONTROLS Pvt. Ltd. 12, GIDC, MAKARPURA, VADODARA - 390010			MATERIAL		
					MSI No.		
DRAWN BY	NC	DATE	10-08-2017	FINISH			
CHKD. BY	NC	DATE	10-08-2017				
APPROVED BY	SJS	DATE	10-08-2017	WEIGHT			
FIRST ANGLE PROJECTION 		SCALE NTS		DESCRIPTION Inline Fuse Connector Male and Female Combination			
SHEET 1 OF 1		SHEET SIZE A4		DRG. NUMBER EMPV4IFC		REV 0	
EG-F/7-3086-03rd Dec 2019_Ver1.00							